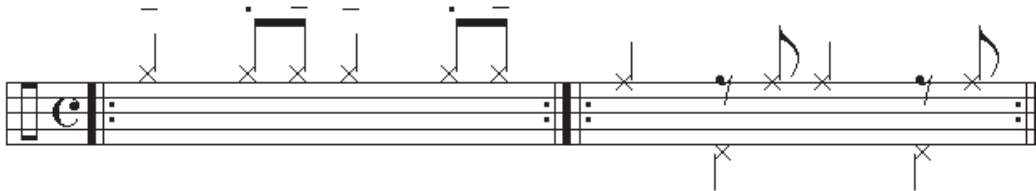


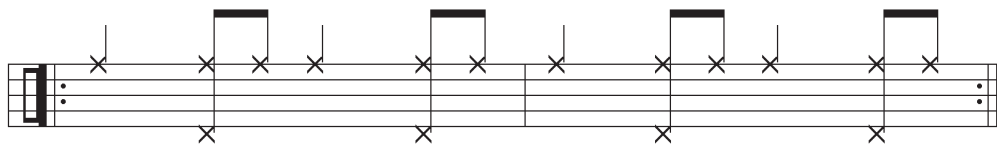
DRUMSET STYLES

(Most of these are examples only. Those marked with * must be established as written (at least 8 bars) before varying)

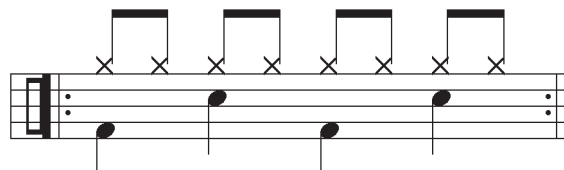
Swing in 2



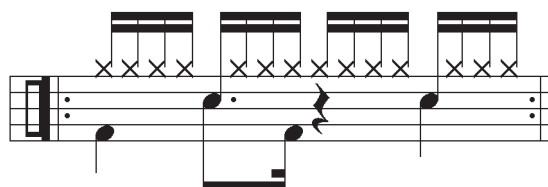
Swing in 4



Rock

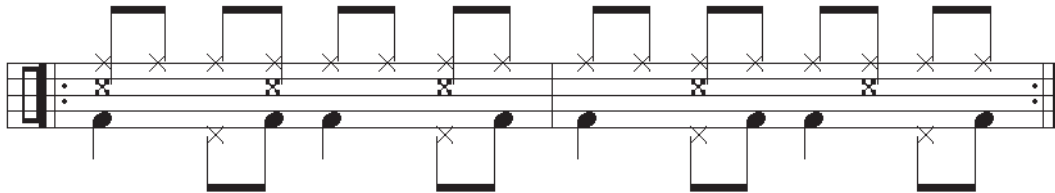


Funk



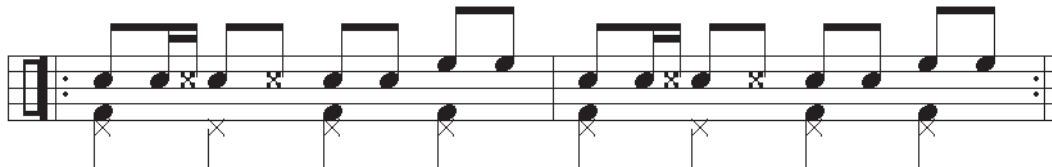
Bossa Nova*

Bossa Nova



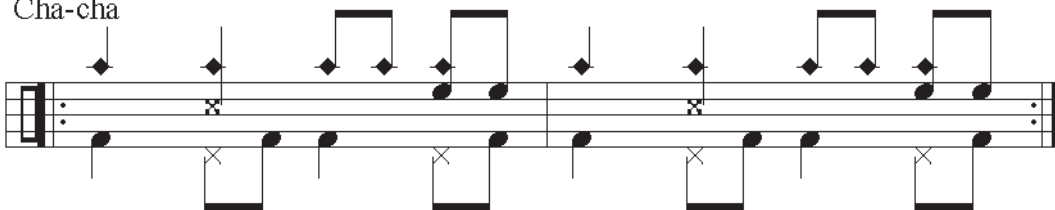
Rhumba*

Rhumba



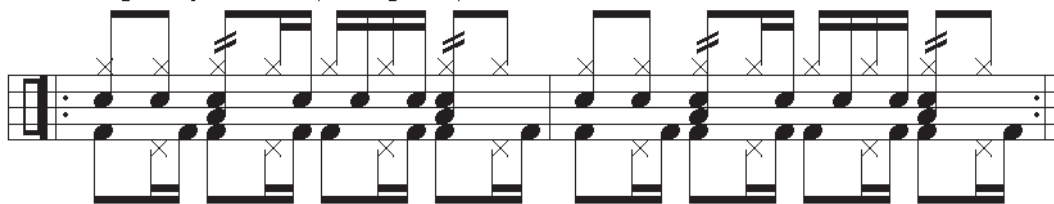
Cha-Cha*

Cha-cha



Contemporary Samba

Contemporary Samba (example B)



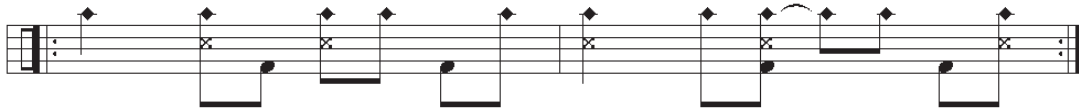
Mambo*

Mambo

The image shows a musical score for a piece titled "Mambo*". The score is written on a grand staff, which consists of two staves joined by a brace on the left. The top staff is a treble clef and the bottom staff is a bass clef. The music is in 2/4 time, as indicated by the time signature at the beginning. The key signature is one flat (B-flat), indicated by a flat symbol on the first line of the treble staff. The piece consists of two measures. The first measure contains a melody in the treble staff starting on G4, moving up to A4, Bb4, and C5, with a repeat sign after the first two notes. The bass staff has a single note G3. The second measure contains a melody in the treble staff starting on G4, moving up to A4, Bb4, and C5, with a repeat sign after the first two notes. The bass staff has a single note G3. The piece ends with a double bar line.

“Advanced Latins”

Cascara



Mozambique



Songo



Afro-Cuban (Nañigo)



Basic Rock Patterns

♩ = 80-120

1 2 3 4 5 6 7 8 9 10 11 12 13 14 15 16 17 18

When playing right hand on ride cymbal, play hi-hat with left foot:

- a) on beats 2 and 4
- b) on all four beats
- c) on every eighth note
- d) on offbeat eighth notes

Basic Funk Patterns

The image displays a musical score for a single melodic line, likely for a guitar or piano, in 2/4 time. The score consists of 18 numbered measures, arranged in six rows of three. The notation is as follows:

- Measure 1:** Quarter note G4, quarter note A4, quarter note B4, quarter note C5, quarter note B4, quarter note A4, quarter note G4, quarter rest.
- Measure 2:** Quarter note G4, quarter note A4, quarter note B4, quarter note C5, quarter note B4, quarter note A4, quarter note G4, quarter rest.
- Measure 3:** Quarter note G4, quarter note A4, quarter note B4, quarter note C5, quarter note B4, quarter note A4, quarter note G4, quarter rest.
- Measure 4:** Quarter note G4, quarter note A4, quarter note B4, quarter note C5, quarter note B4, quarter note A4, quarter note G4, quarter rest.
- Measure 5:** Quarter note G4, quarter note A4, quarter note B4, quarter note C5, quarter note B4, quarter note A4, quarter note G4, quarter rest.
- Measure 6:** Quarter note G4, quarter note A4, quarter note B4, quarter note C5, quarter note B4, quarter note A4, quarter note G4, quarter rest.
- Measure 7:** Quarter note G4, quarter note A4, quarter note B4, quarter note C5, quarter note B4, quarter note A4, quarter note G4, quarter rest.
- Measure 8:** Quarter note G4, quarter note A4, quarter note B4, quarter note C5, quarter note B4, quarter note A4, quarter note G4, quarter rest.
- Measure 9:** Quarter note G4, quarter note A4, quarter note B4, quarter note C5, quarter note B4, quarter note A4, quarter note G4, quarter rest.
- Measure 10:** Quarter note G4, quarter note A4, quarter note B4, quarter note C5, quarter note B4, quarter note A4, quarter note G4, quarter rest.
- Measure 11:** Quarter note G4, quarter note A4, quarter note B4, quarter note C5, quarter note B4, quarter note A4, quarter note G4, quarter rest.
- Measure 12:** Quarter note G4, quarter note A4, quarter note B4, quarter note C5, quarter note B4, quarter note A4, quarter note G4, quarter rest.
- Measure 13:** Quarter note G4, quarter note A4, quarter note B4, quarter note C5, quarter note B4, quarter note A4, quarter note G4, quarter rest.
- Measure 14:** Quarter note G4, quarter note A4, quarter note B4, quarter note C5, quarter note B4, quarter note A4, quarter note G4, quarter rest.
- Measure 15:** Quarter note G4, quarter note A4, quarter note B4, quarter note C5, quarter note B4, quarter note A4, quarter note G4, quarter rest.
- Measure 16:** Quarter note G4, quarter note A4, quarter note B4, quarter note C5, quarter note B4, quarter note A4, quarter note G4, quarter rest.
- Measure 17:** Quarter note G4, quarter note A4, quarter note B4, quarter note C5, quarter note B4, quarter note A4, quarter note G4, quarter rest.
- Measure 18:** Quarter note G4, quarter note A4, quarter note B4, quarter note C5, quarter note B4, quarter note A4, quarter note G4, quarter rest.

Also play these patterns:

1. RH plays all sixteenth notes on hi-hat
2. Eighth notes in RH on hi-hat
3. Quarter notes on hi-hat